

Renew-Crete® ***Systems***

Innovative Products

For An Innovative Industry

Your Success is our Priority

Dear Friend,

As you know, Decorative Concrete is one of the fastest growing segments of today's concrete industry. We want to thank you for your inquiry into our line of Decorative Concrete Products. Weather you are an existing contractor or someone starting a new business, you have made a wise decision choosing *Renew-Crete Systems®*. We can help you be successful by providing cutting edge products and quality support.

No prior experience is necessary! We at *Renew-Crete Systems®* also provide turnkey solutions for new ventures into the exciting field of decorative concrete. *Renew-Crete Systems®* provides full training in all areas of decorative concrete, as well as full technical support for our applicators in the field. *Renew-Crete Systems®* will also teach you proven marketing strategies and provide you with affordable marketing material to help insure your success.

***Renew-Crete Systems®* developed our products and application techniques with the applicator in mind. We have created a truly user-friendly decorative concrete system. Our one component bag mixes are the choice for professionals and beginners alike. You will save time, money and achieve a higher standard of quality by insisting on *Renew-Crete®* products.**



With *Renew-Crete Systems®*, your search for dependable, high quality Decorative Concrete Products, Service, Equipment and Support, is finally over. With our years of field experience, we assure you that your technical questions will be answered with professionalism and real know-how.

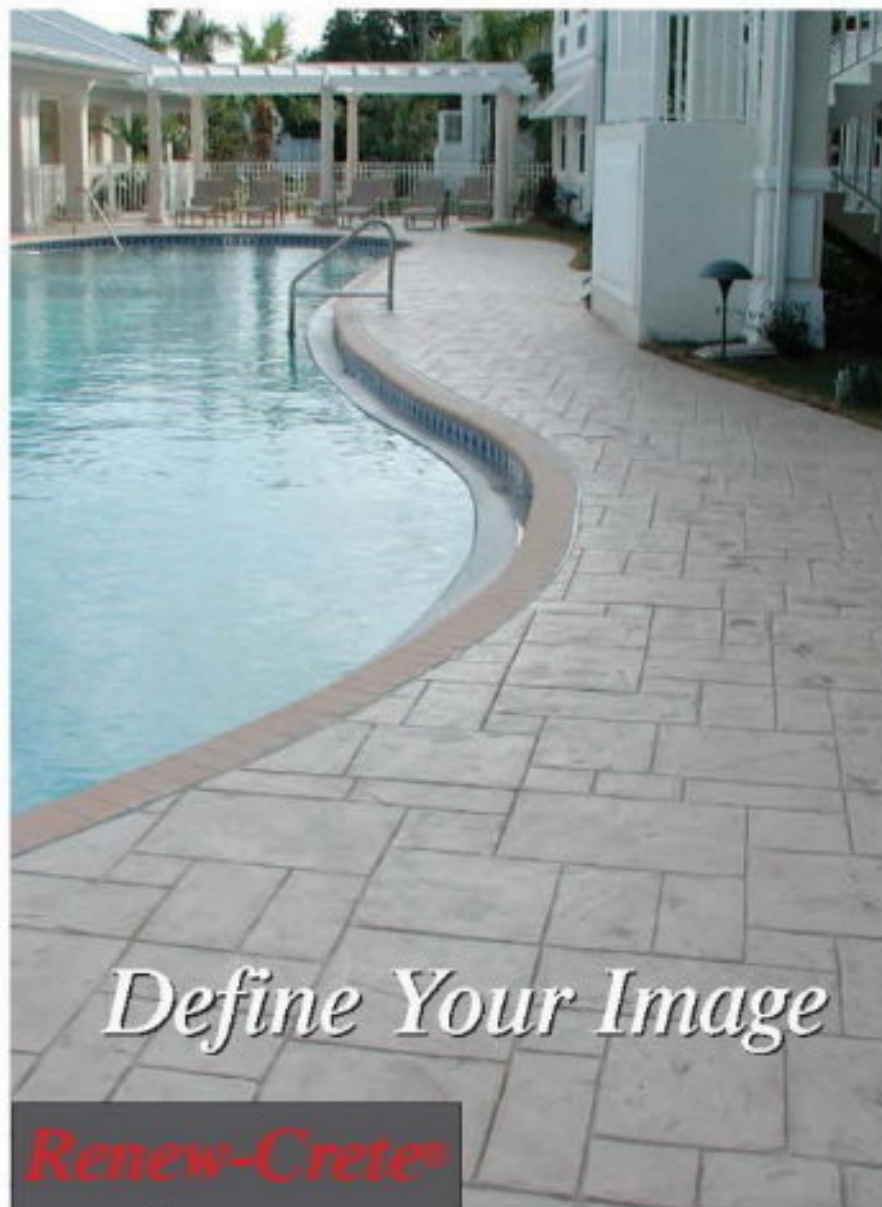
After you review this information package, please call to speak with a member of our knowledgeable staff regarding any questions you may have.

1-888-287-8962

NO MINIMUM PURCHASES / NO FRANCHISE FEES

www.renewcrete.net

High Profits in the Decorative Concrete Industry!



Define Your Image

Renew-Crete®
Systems

*Innovative Products
For an Innovative Industry*

- ▶ *No Experience Needed, We Teach You!*
- ▶ *Startup Programs Available!*
- ▶ *The User Friendly System*
- ▶ *Lowest Cost per SQ. FT.*
- ▶ *No Franchise Fees!*
- ▶ *Ask About Free Training!*

Stamped Concrete
Newly poured concrete, colored, stamped, antiqued and sealed. Great for commercial, residential and industrial applications.



Stamped Overlays
This stamped, modified cement topping over existing surfaces. (1/4 inch to 2 inches)



Spray Texture
This sprayed, modified cement topping is patterned using stencils or tape. (1/16 inch to 1/4 inch)



Acid Staining
A chemically reactive staining method for existing concrete, which gives a mottled look.



Broom Finishes
Thin, modified cement topping is applied over old concrete for a new finish. (1/32 inch to 1/16 inch)



Concrete Countertops
The ultimate in solid kitchen surfaces. Concrete is one of the most popular choices available today.



Profit Estimate Analysis Sheet

Type of Application	Average Sales Price	Material Cost per Sq. Ft.	Labor Cost per Sq. Ft.	Total Cost per Sq. Ft.	Est. Profit per Sq. Ft.	Est. Profit on a 1000 Sq. Ft. Job	Days to Complete	Gross Profit Margin
Renew-Crete® Re-Coat Neutral Gray	\$2.25	.17	.16	.33	1.92	\$1,920.00	1	85%
Renew-Crete® Re-Coat Colored	\$2.75	.38	.25	.63	2.12	\$2,120.00	1	77%
Renew-Crete® Spray Coat Plain	\$3.50	.30	.25	.55	2.95	\$2,950.00	1	84%
Renew-Crete® Spray Coat Stenciled	\$5.00	.78	.40	1.18	3.82	\$3,820.00	1	76%
Renew-Crete® Imprinted Overlay	\$8.00	1.85	.50	2.35	5.65	\$5,650.00	3	70%
Renew-Crete® Imprinted Concrete	\$8.00	1.86	.60	2.46	5.54	\$5,540.00	3	69%
Renew-Crete® Averages	\$4.91	\$.89	\$.36	\$1.25	\$3.67	\$3,667.00	1.8	76.8%

Estimated Average Gross profit margin = 76.8%

Estimated annual sales and growth of only 35% Annually:

Year 1:

1200 Sq. Ft. per week @ Avg. sales price \$4.91 Sq. Ft. = \$5,892.00 x 45 Weeks

Gross Sales = \$265,140.00

Material & labor @ 28%: = \$ 61,512.48

Avg. Est. Gross profit @ 76.8%: = \$203,627.52

Year 2:

1600 Sq. Ft. per week @ Avg. sales price \$4.91 Sq. Ft. = \$7,856.00 x 45 Weeks

Gross Sales = \$353,520.00

Material & labor @ = \$ 82,016.64

Avg. Est. Gross profit @ 76.8%: = \$271,503.36

Year 3:

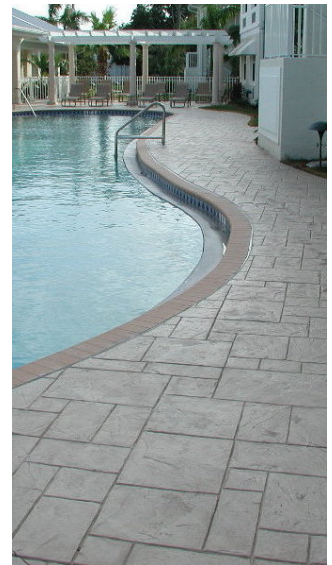
2160 Sq. Ft. per week @ Avg. sales price \$4.91 Sq. Ft. = \$10,605.60 x 45 Weeks

Gross Sales = \$477,252.00

Material & labor @ = \$ 110,722.47

Avg. Est. Gross profit @ 76.8%: = \$366,529.53

*Note: The above figures are for representation only. Renew-Crete Systems, inc. can in no way guarantee cost, sales prices or profits. These figures are an average nationwide as stated by our customers, as well as our own experience.



Renew-Crete® Systems

Innovative Products
For An Innovative Industry

Certified Training Course

Areas Covered

Surface Preparation:

From start to finish probably the single most important part is surface preparation. Roughly 90% of all problems for dealers arise from an improperly prepared surface. We teach you how to do it right.

Crack Repair:

A proven fact is that if you do not properly repair a crack in old concrete, it will come back. The **Renew-Crete®** method of crack repair is proven to be effective.

Application: Covering these areas:

- Renew-Crete®** Imprinted Overlay
- Renew-Crete®** Stamped Concrete
- Renew-Crete®** Spray Coat
- Renew-Crete®** Re-Coat
- Renew-Crete®** Chemical Stains
- Renew-Crete®** Patch-It

Detailing:

Detailing is an important part of the finished product and we will teach you how to do it properly.

- Honoring control Joints
- Detailing the joints
- Fixing imperfections

Antique & Seal:

This is where the project comes to life. We have a unique antique system that is as easy as to use, as it is versatile. The **Renew-Crete®** antiquing system is used to give the project a realistic finish to simulate real stone or slate.

Marketing & Job Estimating:

Classroom style teaching on job estimating, value building, price structuring and proven marketing strategies and techniques that will help you build a profitable business fast.



What You Get

Hands on Experience:

The **Renew-Crete®** Training seminar is geared towards giving you the knowledge and hands on experience you will need to **successfully** complete projects of all types.

Proven Techniques

Our techniques and products are field tested and proven. The information you gain at our seminars will help insure your success. Our training staff has years of field knowledge in this industry. They will teach you techniques you need know to help you avoid errors that could cost you time, unsatisfied customers, and money. Some dealers try to learn on their own, and some eventually do. In the process they tend to lose thousands of dollars from costly mistakes that could easily have been avoided with proper training. One project, done properly can bring you 3-5 projects by word of mouth advertising alone. Just imagine what 100 of those can bring you! The **Renew-Crete®** product line is the highest quality, most advanced and easiest to use product line in the industry and we will prove it to you!

Free Technical Support

We offer free technical support to all of our dealers from Highly Trained Personnel. Our technical support personnel are trained and well versed in all aspects of field applications.

Free Sample Boards

After the seminar is over you will receive finished sample boards of different patterns, applications, and colors. These are sample boards that you can use in shows as well as take to prospective clients to show. These sample boards will help you get projects! These alone are worth more than you invest in the Certified Training!

Call 1-888-287-8962 now to reserve your space!

Certified Training Course

Learn one of the fastest growing and most profitable businesses available today!



The **Renew-Crete® System** offers a rewarding, high profit business opportunity that can help you achieve **financial independence** with very low startup costs.

The Renew-Crete® Advantage:

- No experience needed. We offer full training!
- Our training process will help to insure your success.
- You can earn up to \$4,000.00+ per week!
- Time tested and proven methods!
- Highest quality materials in the Industry!
- Finally a **user-friendly system!**
- Toll free technical support.
- No Franchise fees ever!
- Practical field knowledge.
- Marketing techniques and materials.
- Startup Packages are available for a low monthly investment.



Before



After

“Call for current dates and specials”

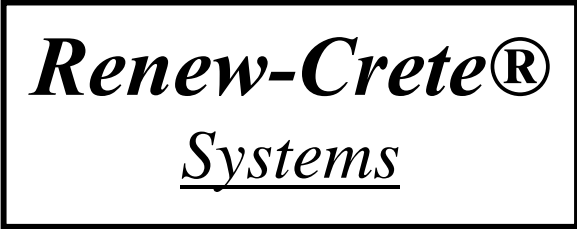
Training Seminar Schedule 2004/2005

Nov 04		Dec. 04		January 05		February 05		March 05		April 05	
Thur/Fri	Teu/Wed	Teu/Wed	Fri/Sat	Teu/Wed	Thu/Fri	Teu/Wed	Thu/Fri	Teu/Wed	Thu/Fri	Teu/Wed	
4/5 th	7/8 th	14/15 th	14/15 th	25/26	10/11 th	22/23 rd	10/11 th	21/22 nd	7/8 th	19/20 th	

**Call today
To Reserve Your Space!
1-888-287-8962**

Seminar Fees: \$350.00 per company (1 attendee)
\$150.00 per additional attendee
Advance reservations required.
Lunch is provided

Free Training is Available! Call for details



Sales Representative: _____

Training Seminar Sign Up Sheet

Date _____

Company Name _____

Address _____

City _____ State _____ Zip _____ Country _____

Phone # _____ Cell # _____ Fax # _____

E-Mail _____

Requested Seminar Date _____

Decorative Concrete (2 Day) \$350.00 1st Registration, \$150.00 each additional person.

Individuals Attending:	Cost
1) _____	_____
2) _____	_____
3) _____	_____
4) _____	_____
5) _____	_____

Total _____

Form of Payment (circle one)-----VISA- MC- AMEX- DISC

Name on Card _____ (printed)

Card # _____ Expiration ____ / ____

Billing Address For Card: _____ City _____ State ____ Zip _____

Upon signing this registration sheet, I here by authorize Renew-Crete Systems, Inc. to run the above Credit Card for the agreed amount.

Signature **X** _____ Printed **X** _____ Date: _____

Will you need transportation arrangements YES _____ NO _____

Will you need Hotel arrangements YES _____ NO _____

Fax to: 321-636-7343

The Renew-Crete® System Programs

The Renew-Crete® packages were designed to help you get started in the decorative concrete industry. These packages have most everything you will need to start doing decorative concrete and concrete restoration. Please understand that we **DO NOT require that you buy a package** to do business with us, although we do recommend it for a couple of reasons:

- A) We can offer financing on packages, which will help free up working capital that you will need for advertising, payroll, training personnel and paying general overhead costs while you get your company profitable.
- B) Depending on the package you choose, you will have more patterns to offer your customers, thereby increasing the chances that you will have something that the customer likes.
- C) All packages are completely customizable, so if you already have certain items included in the package, we will exchange it for something you need in materials/tools.

The **Renew-Crete®** System has 5 different packages for you to choose from. This is a brief explanation of the different programs.

Spray Coat Starter Package:

This program is designed to give you the basic tools needed to install the **Renew-Crete®** Spray Coat System and the Renew-Crete® Re-Coat System. This Program also includes enough materials to complete approximately 13,000* sq. ft. of projects or approximately \$47,000.00* in jobs. You also receive 5 finished sample boards for sales presentations and a presentation binder.

Stamp Starter Package:

This program is designed to give you the basic tools needed to install the **Renew-Crete®** overlay system and /or stamped concrete. This program includes **one set of imprint tools** of your choice, enough materials to complete approximately 5,000* sq. ft. of projects or approximately \$28,000.00* in jobs. You also receive 7 finished sample boards for sales presentations and a presentation binder.

Complete Starter Package:

This is a combination of the Stamp Starter Program as well as the Spray Coat Starter Program, which will give you the complete tool set which will give you all the basic tools needed to install **Renew-Crete®** Spray Coat, **Renew-Crete®** Stamped Overlay, **Renew-Crete®** Stamped Concrete and **Renew-Crete®** Re-Coat Systems. Additionally you also receive **2 sets of imprint tools** instead of just one, enough materials to complete approximately 16,000* sq. ft. of projects or approximately \$73,000.00* in jobs. You also receive 8 finished sample boards for sales presentations, a presentation binder and plenty of marketing materials.

Silver Dealer Package:

In the Silver Dealer Program you will receive the complete tool set which will give you all the basic tools needed to install the **Renew-Crete®** Spray Coat, **Renew-Crete®** Stamped Overlay, **Renew-Crete®** Stamped Concrete and **Renew-Crete®** Re-Coat systems. Additionally you also receive **5 sets of imprint tools**, enough materials to complete approximately 19,000* sq. ft. of projects or approximately \$99,000.00* in jobs. You also receive 8 finished sample boards for sales presentations, a presentation binder and plenty of marketing materials.

Gold Dealer Package:

In the Gold Dealer Program you will receive the complete tool set which will give you all the basic tools needed to install the **Renew-Crete®** Spray Coat, **Renew-Crete®** Stamped Overlay, **Renew-Crete®** Stamped Concrete and **Renew-Crete®** Re-Coat systems. Additionally you also receive **8 sets of imprint tools**, enough materials to complete approximately 28,000* sq. ft. of projects or approximately \$140,000.00* in jobs. You also receive 8 finished sample boards for sales presentations, a presentation binder, Renew-Crete® T-Shirts, Vehicle lettering, Renew-Crete® Yard Signs and plenty of marketing materials.

All packages are completely customizable.

* All samples of square footage and estimates for values of such are representations only and are not guaranteed. Things that may affect these figures are application techniques, types of finishes, and retail prices, and other variables over which Renew-Crete® Systems has no control.

Spray Coat Starter

Tools

- 1 Spraying Mantis Floor Texture Gun
- 1 Hopper Gun Stand
- 1 Portable Air Compressor w/ 50' Hose, air regulator, fittings
- 1 18" Steel Floor Scraper
- 1 24" Straight Squeegee with handle
- 2 16" Soft grip Rounded Trowel (Long Shank)
- 1 Supreme 5" x .080" Diamond Blade
- 1 4" .250 Tuckpoint Supreme
- 1 4"x .375 Tuckpoint Supreme
- 1 4" Diamond Segmented Crack Chaser
- 1 4" Angle Grinder 5/8 Arbor
- 1 Measuring Wheel
- 1 Quick Mixer 6.5" Blade
- 4 5 pint graduated measuring container
- 5 5 Gal Mixing pail
- 1 SP-1963 Sealer Sprayer 3.5 Gal Steel
- 1 Aluminum handle adapter for broom
- 1 Wood Cement Finishing Broom 36"
- 2 6' x 1 1/2" Aluminum Ext. Handle
- 1 Stencil Float 5x8 Stencil Border Float

Materials

- 100 Spray Coat Mix Light Base 45 Lb Bag (50 LB / 50 DB)
- 1 CP-All 1 of each of the 30 color packs
- 50 CP-Color Packs
- 10 Re-Coat Neutral 45 Lb Bag
- 20 Re-Coat LB/DB 45 Lb Bag
- 5 Patch-It leveling compound 45 Lb Bag
- 2 Crack-2 2 Gallon kit of Crack Epoxy
- 2 Crack Mesh 4" x100'
- 24 1/2" Grout Tape
- 10 Renew-Crete High seal 30% 5 gal
- 1 Xylene 5 gal Pails
- 3 Stencil 1076 sq. ft.
- 2 Header 333 LF

Marketing

- 200 Bro-SC Spray Coat Brochures
- 3 Spray Coat Sample Board
- 2 Re-Coat Sample Board
- 1 Renew-Crete Sales Book



3,000 Sq. Ft Stenciled Spray Coat @ \$5.00:	\$15,000.00
5,000 Sq. Ft Plain Spray Coat @ \$3.50:	\$17,500.00
1,800 Sq. Ft. Re-Coat Neutral @ \$2.25:	\$ 4,050.00
3,600 Sq. Ft. Re-Coat Colored @ 2.75:	\$ 9,900.00
200 Lin. Ft. Crack Repair @ 3.00:	\$ 600.00

Approximate Retail Value:

\$47,050.00

Package Value:	\$7,955.93
Seminar Refund:	-\$ 350.00
Your Investment:	\$7,605.93

Monthly Investment:
only \$353.60*
for 24 Months

*WAC: Terms and payment may vary.

Stamped Starter

Tools

- 1 Impact Tool
- 1 Hand Tools Narrow Jnt
- 1 36" Gauge Rake
- 1 24" Straight Squeegee with handle
- 1 30" Steel Fresno
- 1 Cage Roller
- 1 Fresno Adapter
- 2 6' x 1 1/2" Aluminum Ext. Hndl
- 1 42" Mag Bull float
- 1 Pro Series Rock-It Angle adapter
- 1 16" Mag Float
- 1 Square Steel 18" Finish Trowel
- 2 16" Soft grip Rounded Trowel
- 2 5" x 2" Margin Trowel
- 1 Supreme 5" x .080" Diamond Blade
- 1 4" .250 Tuckpoint Supreme
- 1 4"x .375 Tuckpoint Supreme
- 1 4" Diamond Segmented Crack Chaser
- 1 4" Angle Grinder 5/8 Arbor
- 1 Measuring Wheel
- 1 Quick Mixer 6.5" Blade
- 1 20" Concrete Kumalong w/Vinyl Handle
- 4 5 pint graduated measuring container
- 5 5 Gal Mixing pail
- 2 Tampico Dash Brush
- 1 3" x 6" x 3/8" Hand Edger
- 1 SP-1963 Sealer Sprayer 3.5 Gal Steel
- 1 2 gallon Constr. Sprayer
- 1 2 gallon Acid Sprayer
- 1 6x3x1 Carborundum Rubbing Brick
- 2 Acid Scrub Brush

Materials

- 20 Colorhard 60 Lb Pail
- 1 Colored Release Powder 30 Lbs
- 20 Concentrated Stamp Mix 40 Lb Bag
- 1 CP-All 1 of each of the 30 color packs
- 40 CP-Color Packs
- 5 Bond Coat 45 Lbs
- 2 Color Wash Antique Powder 10 Lbs
- 1 Liquid Release 5 gal
- 10 Re-Coat Neutral 45 Lb Bag
- 3 Patch-It Light (for acid stain) 45 Lb Bag
- 2 Acid Stains 1 gallon
- 2 Crack-2 2 gallon kit Crack Epoxy
- 1 Crack Mesh 4" x100'
- 5 Renew-Crete Sealer 5 gal
- 1 Xylene 5 gal Pails
- 1 Rhino-Grip (Case of 6)

Marketing

- 200 Bro-SM Stamp Brochures
- 2 Overlay Sample Board
- 3 Spray Coat Sample Board
- 2 Re-Coat Sample Board
- 1 Renew-Crete Sales Book

1 Stamp Pattern

- 1 Set of A Mats



Package Value: \$8,004.84
 Seminar Refund: -\$ 350.00
 Your Investment: \$7,654.84

Monthly Investment:
Only \$355.87*
for 24 Months

*WAC: Terms and payment may vary.

1,620 Sq. Ft Stamped Concrete @ \$8.00: \$12,960.00
 900 Sq. Ft Stamped Overlay @ \$8.00: \$ 7,200.00
 1,800 Sq. Ft. Re-Coat Neutral @ \$2.25: \$ 4,050.00
 800 Sq. Ft. Acid Stain @\$5.00 \$ 4,000.00
 200 Lin. Ft. Crack Repair @ 3.00: \$ 600.00

Approximate Retail Value:
\$28,810.00

Complete Starter

Tools

- 1 Impact Tool
- 1 Hand Tools Narrow Jnt
- 1 36" Gauge Rake
- 1 24" Straight Squeegee with handle
- 1 30" Steel Fresno
- 1 Cage Roller
- 1 Fresno Adapter
- 2 6' x 1 1/2" Aluminum Ext. Hndl
- 1 42" Mag Bullfloat
- 1 Pro Series Rock-It Angle adapter
- 1 16" Mag Float
- 1 18" Steel Floor Scraper
- 1 Square Steel 18" Finish Trowel
- 2 16" Softgrip Rounded Trowel
- 2 5" x 2" Margin Trowel
- 1 Supreme 5" x .080" Diamond Blade
- 1 4" .250 Tuckpoint Supreme
- 1 4"x .375 Tuckpoint Supreme
- 1 4" Diamond Segmented Crack Chaser
- 1 4" Angle Grinder 5/8 Arbor
- 1 Measuring Wheel
- 1 Quick Mixer 6.5" Blade
- 1 20" Concrete Kumalong w/Vinyl Hndl
- 4 5 pint graduated measuring container
- 5 5 Gal Mixing pail
- 2 Tampico Dash Brush
- 1 3" x 6" x 3/8" Hand Edger
- 1 SP-1963 Sealer Sprayer 3.5 Gal Steel
- 1 2 gallon Constr. Sprayer
- 1 2 gallon Acid Sprayer
- 1 6x3x1 Carborundum Rubbing Brick
- 1 Spraying Mantis Floor Texture Gun
- 1 Hopper Gun Stand
- 1 Portable Air Compressor w/ 50' Hose
- 2 Acid Scrub Brush
- 1 Aluminum handle adapter for broom
- 1 Wood Cement Finishing Broom 36"
- 1 Stencil Float 5x8 Stencil Border Float

Materials

- 12 Colorhard 60 Lb Pail
- 1 Colored Release Powder 30 Lbs
- 50 Concentrated Stamp Mix 40 Lb Bag
- 10 Bond Coat 45 Lb Bag
- 1 CP-All 1 of each of the 30 color packs
- 100 CP-Color Packs
- 3 Color Wash Antique Powder 10 Lbs
- 2 Liquid Release 5 gal
- 10 Re-Coat Neutral 45 Lb Bag
- 20 Re-Coat LB/DB 45 Lb Bag
- 50 Spray Coat Mix 45 Lb Bag
- 5 Patch-It leveling compound 45 Lb Bag
- 5 Patch-It Light (for Acid Staining)
- 8 Acid Stains
- 2 Crack-2 2 Gallon kit of Crack Epoxy
- 2 Crack Mesh 4" x100'
- 12 1/2" Grout Tape
- 12 Renew-Crete Sealer 5 gal
- 2 Xylene 5 gal Pails
- 2 Stencil 1076 sq. ft.
- 1 Header 333 LF
- 1 Rhino-Grip (Case of 6)

Marketing

- 200 Bro-SM Stamp Brochures
- 50 Bro-AS Acid Stain Brochures
- 200 Bro-SC Spray Coat Brochures
- 3 Overlay Sample Board
- 3 Spray Coat Sample Board
- 2 Re-Coat Sample Board
- 1 Renew-Crete Sales Book

2 Stamp Patterns

- 1 A Set of Mats
- 1 B Set of Mats



Package Value: \$16,463.36
Seminar Refund: -\$ 350.00
Your Investment: \$16,113.36

Monthly Investment:
only \$516.43* for 36 Mo.

*WAC: Terms and payment may vary.

972 Sq. Ft Stamped Concrete @ \$8.00: \$ 7,776.00
2,250 Sq. Ft Stamped Overlay @ \$8.00: \$18,000.00
2,000 Sq. Ft Stenciled Spray Coat @ \$5.00: \$ 10,000.00
2,000 Sq. Ft Plain Spray Coat @ \$3.50: \$ 7,000.00
1,800 Sq. Ft. Re-Coat Neutral @ \$2.25: \$ 4,050.00
3,600 Sq. Ft. Re-Coat Colored @ \$2.75: \$ 9,900.00
3200 Sq. Ft. Acid Stain @\$5.00 \$16,000.00
200 Lin. Ft. Crack Repair @ 3.00: \$ 600.00

Approximate Retail Value:
\$73,326.00

Silver Dealer

Tools

- 1 Impact Tool
- 1 Hand Tools Narrow Jnt
- 1 36" Gauge Rake
- 1 24" Straight Squeegee with handle
- 1 30" Steel Fresno
- 1 Cage Roller
- 1 Fresno Adapter
- 2 6' x 1 1/2" Aluminum Ext. Hndl
- 1 42" Mag Bullfloat
- 1 Pro Series Rock-It Angle adapter
- 1 16" Mag Float
- 1 18" Steel Floor Scraper
- 1 Square Steel 18" Finish Trowel
- 2 16" Softgrip Rounded Trowel
- 2 5" x 2" Margin Trowel
- 1 Supreme 5" x .080" Diamond Blade
- 1 4" .250 Tuckpoint Supreme
- 1 4"x .375 Tuckpoint Supreme
- 1 4" Diamond Segmented Crack Chaser
- 1 4" Angle Grinder 5/8 Arbor
- 1 Measuring Wheel
- 1 Quick Mixer 6.5" Blade
- 1 20" Concrete Kumalong w/Vinyl Hndl
- 4 5 pint graduated measuring container
- 5 5 Gal Mixing pail
- 2 Tampico Dash Brush
- 1 3" x 6" x 3/8" Hand Edger
- 1 SP-1963 Sealer Sprayer 3.5 Gal Steel
- 1 2 gallon Constr. Sprayer
- 1 2 gallon Acid Sprayer
- 1 6x3x1 Carborundum Rubbing Brick
- 1 Spraying Mantis Floor Texture Gun
- 1 Hopper Gun Stand
- 1 Portable Air Compressor w/ 50' Hose
- 2 Acid Scrub Brush
- 1 Aluminum handle adapter for broom
- 1 Wood Cement Finishing Broom 36"
- 1 Stencil Float 5x8 Stencil Border Float

Materials

- 24 Colorhard 60 Lb Pail
- 2 Colored Release Powder 30 Lbs
- 100 Concentrated Stamp Mix 40 Lb Bag
- 20 Bond Coat 45 Lb Bag
- 1 CP-All 1 of each of the 30 color packs
- 100 CP-Color Packs
- 5 Color Wash Antique Powder 10 Lbs
- 4 Liquid Release 5 gal
- 10 Re-Coat Neutral 45 Lb Bag
- 20 Re-Coat LB/DB 45 Lb Bag
- 50 Spray Coat Mix 45 Lb Bag
- 5 Patch-It leveling compound 45 Lb Bag
- 5 Patch-It Light (for Acid Staining)
- 8 Acid Stains
- 2 Crack-2 2 Gallon kit of Crack Epoxy
- 2 Crack Mesh 4" x100'
- 12 1/2" Grout Tape
- 12 Renew-Crete Sealer 5 gal
- 2 Xylene 5 gal Pails
- 2 Stencil 1076 sq. ft.
- 1 Header 333 LF
- 1 Rhino-Grip (Case of 6)

Marketing

- 200 Bro-SM Stamp Brochures
- 50 Bro-AS Acid Stain Brochures
- 200 Bro-SC Spray Coat Brochures
- 3 Overlay Sample Board
- 3 Spray Coat Sample Board
- 2 Re-Coat Sample Board
- 1 Renew-Crete Sales Book

5 Stamp Patterns

- 3 A Sets of Mats
- 2 B Sets of Mats



Package Value: \$26,500.21
Seminar Refund: -\$ 350.00
Your Investment: \$26,150.21

Monthly Investment:
only \$537.39* for 60 Mo.

*WAC: Terms and payment may vary.

1,944 Sq. Ft Stamped Concrete @ \$8.00:	\$15,552.00
4,500 Sq. Ft Stamped Overlay @ \$8.00:	\$36,000.00
2,000 Sq. Ft Stenciled Spray Coat @ \$5.00:	\$10,000.00
2,000 Sq. Ft Plain Spray Coat @ \$3.50:	\$ 7,000.00
1,800 Sq. Ft. Re-Coat Neutral @ \$2.25:	\$ 4,050.00
3,600 Sq. Ft. Re-Coat Colored @ \$2.75:	\$ 9,900.00
3200 Sq. Ft. Acid Stain @\$5.00	\$16,000.00
200 Lin. Ft. Crack Repair @ 3.00:	\$ 600.00

Approximate Retail Value:
\$99,102.00

Gold Dealer

Tools

- 1 Impact Tool
- 1 Hand Tools Narrow Jnt
- 1 36" Gauge Rake
- 1 24" Straight Squeegee with handle
- 1 30" Steel Fresno
- 1 Cage Roller
- 1 Fresno Adapter
- 2 6' x 1 1/2" Aluminum Ext. Hndl
- 1 42" Mag Bullfloat
- 1 Pro Series Rock-It Angle adapter
- 1 16" Mag Float
- 1 18" Steel Floor Scraper
- 1 Square Steel 18" Finish Trowel
- 2 16" Softgrip Rounded Trowel
- 2 5" x 2" Margin Trowel
- 1 Supreme 5" x .080" Diamond Blade
- 1 4" .250 Tuckpoint Supreme
- 1 4"x .375 Tuckpoint Supreme
- 1 4" Diamond Segmented Crack Chaser
- 1 4" Angle Grinder 5/8 Arbor
- 1 Measuring Wheel
- 1 Quick Mixer 6.5" Blade
- 1 20" Concrete Kumalong w/Vinyl Hndl
- 4 5 pint graduated measuring container
- 5 5 Gal Mixing pail
- 2 Tampico Dash Brush
- 1 3" x 6" x 3/8" Hand Edger
- 1 SP-1963 Sealer Sprayer 3.5 Gal Steel
- 1 2 gallon Constr. Sprayer
- 1 2 gallon Acid Sprayer
- 1 6x3x1 Carborundum Rubbing Brick
- 1 Spraying Mantis Floor Texture Gun
- 1 Hopper Gun Stand
- 1 Portable Air Compressor w/ 50' Hose
- 2 Acid Scrub Brush
- 1 Aluminum handle adapter for broom
- 1 Wood Cement Finishing Broom 36"
- 1 Stencil Float 5x8 Stencil Border Float

Materials

- 36 Colorhard 60 Lb Pail
- 3 Colored Release Powder 30 Lbs
- 100 Concentrated Stamp Mix 40 Lb Bag
- 10 Bond Coat 45 Lb Bag
- 1 CP-All 1 of each of the 30 color packs
- 200 CP-Color Packs
- 5 Color Wash Antique Powder 10 Lbs
- 2 Liquid Release 5 gal
- 25 Re-Coat Neutral 45 Lb Bag
- 50 Re-Coat LB/DB 45 Lb Bag
- 100 Spray Coat Mix 45 Lb Bag
- 10 Patch-It leveling compound 45 Lb Bag
- 10 Patch-It Light (for Acid Staining)
- 8 Acid Stains
- 8 Crack-2 2 Gallon kit of Crack Epoxy
- 8 Crack Mesh 4" x100'
- 12 1/2" Grout Tape
- 24 Renew-Crete Sealer 5 gal
- 2 Xylene 5 gal Pails
- 2 Stencil 1076 sq. ft.
- 1 Header 333 LF
- 1 Rhino-Grip (Case of 6)

Marketing

- 200 Bro-SM Stamp Brochures
- 50 Bro-AS Acid Stain Brochures
- 200 Bro-SC Spray Coat Brochures
- 3 Overlay Sample Board
- 3 Spray Coat Sample Board
- 2 Re-Coat Sample Board
- 1 Renew-Crete Sales Book
- 10 Renew-Crete® Yard Sign
- 14 Renew-Crete Shirt l/m/s
- 2 Renew-Crete® Vehicle Lettering (2)

8 Stamp Patterns

- 4 A Set of Mats
- 4 B Set of Mats



Package Value: \$37,679.16
Seminar Refund: -\$ 350.00
Your Investment: \$37,329.16

Monthly Investment:
only \$767.11* for 60 Mo.

*WAC: Terms and payment may vary.

2,916 Sq. Ft Stamped Concrete @ \$8.00: \$23,328.00
4,500 Sq. Ft Stamped Overlay @ \$8.00: \$36,000.00
2,000 Sq. Ft Stenciled Spray Coat @ \$5.00: \$10,000.00
2,000 Sq. Ft Plain Spray Coat @ \$3.50: \$21,000.00
4,500 Sq. Ft. Re-Coat Neutral @ \$2.25: \$10,125.00
9,000 Sq. Ft. Re-Coat Colored @ \$2.75: \$24,750.00
3200 Sq. Ft. Acid Stain @\$5.00 \$16,000.00
800 Lin. Ft. Crack Repair @ 3.00: \$ 2,400.00

Approximate Retail Value:
\$143,603.00

A

Stamping Tool Selections

B**Random Stone:**

- 13 Regular Tools
- 2 Super Flex
- 1 Touch up Skin

**La Habra Slate:**

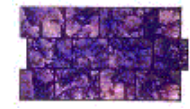
- 12 Regular Tools
- 1 Super Flex
- 1 Touch up Skin

**European Fan:**

- 12 Regular Tools
- 1 Super Flex
- 1 Touch up Skin

**London Cobblestone:**

- 12 Regular Tools
- 1 Super Flex
- 1 Touch up Skin

**8 X 16 Herringbone Slate:**

- 12 Regular Tools
- 1 Super Flex
- 1 Touch up Skin

**24" X 24" Coquina:**

- 12 Regular Tools
- 1 Super Flex
- 1 Touch up Skin

**New Brick Herringbone:**

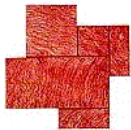
- 12 Regular Tools
- 1 Super Flex
- 1 Touch up Tool

**Old Brick Running Bond:**

- 12 Regular Tools
- 1 Super Flex
- 1 Touch up Tool

**Royal Ashlar:**

- 12 Regular Tools
- 1 Super Flex
- 1 Touch up Skin

**Used Brick Basket Weave:**

- 12 Regular Tools
- 1 Super Flex
- 1 Touch up Tool

**Seamless Slate Set:**

- 6 4' Skins (3 Italian, 3 Roman)
- 4 3' Skins (2 Italian, 2 Roman)
- 2 2' Skins (1 Italian, 1 Roman)

**10" X 20" Running Bond Slate:**

- 12 Regular Tools
- 1 Super Flex
- 1 Touch up Skin

No Picture Available

Seamless Stone Set:

- 6 4' Skins (3Granite, 3 Sandstone)
- 4 3' Skins (2Granite, 2 Sandstone)
- 2 2' Skins (1Granite, 1 Sandstone)

**Notched Ashlar Stone:**

- 12 Regular Tools
- 1 Super Flex
- 1 Touch up Skin

**Seamless Coquina Set:**

- 6 4' Skins (3 Shells, 3 w/o Shells)
- 4 3' Skins (2 Shells, 2 w/o Shells)
- 2 2' Skins (1 Shells, 1 w/o Shells)

**Roman Ashlar Slate:**

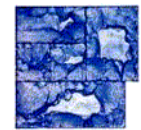
- 12 Regular Tools
- 1 Super Flex
- 1 Touch up Skin

**Cobble Circle 14':**

- 12 14' Circle Tools
- 2 Super Flex
- 1 Touch up Skin

**Notched Ashlar Slate:**

- 12 Regular Tools
- 1 Super Flex
- 1 Touch up Skin

**Grand Ashlar Slate:**

- 8 Regular Tools
- 1 Super Flex
- 1 Touch up Skin / 1 Tool

**8" Wood Plank:**

- 11 Regular Tools
- 1 Super Flex
- 1 Touch up Skin

No Picture Available

Equipment Lease Application



Innovative Products For An Innovative Industry

Lessor: _____

LESSEE (EXACT LEGAL NAME)				DBA	
STREET ADDRESS		CITY	STATE	ZIP	TELEPHONE NO.
LOCATION OF EQUIPMENT		CITY	STATE	ZIP	FAX NO.
TYPE OF BUSINESS	GROSS ANNUAL SALES	YEARS IN BUSINESS	YEAR UNDER CURRENT OWNER	FEDERAL TAX ID NO. (IF ANY)	
PROPRIETORSHIP				STATE OF INCORPORATION	
CORPORATION		PARTNERSHIP		LIMITED LIABILITY CO.	

OWNERSHIP

PRINCIPAL #1 NAME	TITLE	% OWNERSHIP	YRS OF INDUSTRY EXPERIENCE	SOCIAL SECURITY NO.
STREET ADDRESS	CITY	STATE	ZIP	HOME TELEPHONE NO.
PERSONAL ANNUAL GROSS INCOME (Not including spouse)	MONTHLY MORTGAGE/RENT (Residence only)			
PRINCIPAL #2 NAME	TITLE	% OWNERSHIP	YRS OF INDUSTRY EXPERIENCE	SOCIAL SECURITY NO.
STREET ADDRESS	CITY	STATE	ZIP	HOME TELEPHONE NO.
PERSONAL ANNUAL GROSS INCOME (Not including spouse)	MONTHLY MORTGAGE/RENT (Residence only)			

BANK

BANK NAME	CONTACT NAME	CITY	CURRENT CHECKING BALANCE	TELEPHONE NO.
ACCOUNT UNDER NAME OF	CHECKING ACCOUNT NO.	SAVINGS ACCOUNT NO.	LOAN NO.	

TRADES

COMPANY	CONTACT	TELEPHONE
		()
		()

DESIRED TERMS (Check one)

LEASE TERM IN MONTHS

12 24 36 48 60

PURCHASE OPTION

EQUIPMENT DEALER

DEALER NAME

Renew-Crete® Svstems. Inc.

CONTACT	PHONE
Gordon	321-636-8882

EQUIPMENT COST

EQUIPMENT TYPE Decorative Concrete Tools

Fax on fine setting completed application or mail to the address below Attn: Gordon Pennington

FAX: (321) 576-0058
TEL: 888-287-8962

The undersigned individual who is ether a principal, a personal guarantor or a sole proprietorship of the credit applicant, recognizing that his or her individual credit history may be a factor in the evaluation of the credit history of the applicant, hereby consents and authorizes Innovative Lease Services, Inc. or its designee the use of a consumer credit report on the undersigned, from time to time as may be needed.

X

AUTHORIZED SIGNATURE

DATE

ADDITIONAL INFORMATION

If the business has been in operation under present ownership for less than two years, or equipment cost exceeds \$75,000 please provide:

*Financial Statements or Tax Returns on Company for most recent two years and most recent Interim Financial Statement.

Please include an itemized quote, if available.

Renew-Crete® Systems

**Innovative Products
For An Innovative Industry**

Spray Coat

About Spray Coat:

Renew-Crete® Systems continues to be an industry leader in the development of user friendly products.

Advantages:

- Ready to use Just add water, mix & apply!
- Pre-Colored bag mixes.
- Longer pot life.
- Fast cure time.
- Exceptional Durability.
- Can be squeegeed, troweled, broomed, or sprayed.
- Also available in Natural White & Gray.
- Strictest quality control in the industry!
- Superior bonding strength.
- Will not freeze!

Available in:

- 28 color mixes plus Natural White & Neutral Gray



Product Specs

Uses:

- Interior or Exterior
- Commercial & Residential
- Driveways, patios, pool decks, walkways & more!
- Vertical Applications
- Over existing concrete, foam, metal, wood, epoxy, block, Stucco & more!



Before



After

Packaging: 45 Lb Bags

Coverage: 150-250 sq. ft.

Min Cur Time: 4 Hours

Optimum Cure: 24 Hours

RESIDENTIAL DRIVE



RESIDENTIAL CARPORT

RESIDENTIAL POOL DECK



Renew-Crete®
Systems

**Don't Remove It!
Improve It!**

Concrete by Design

*For
Old or New
Concrete!*

***Commercial
Residential
Industrial
Interiors
Exteriors***

Excellent for:

***Roadways
Parkways
Walkways
Pool Decks
Driveways
Patios***

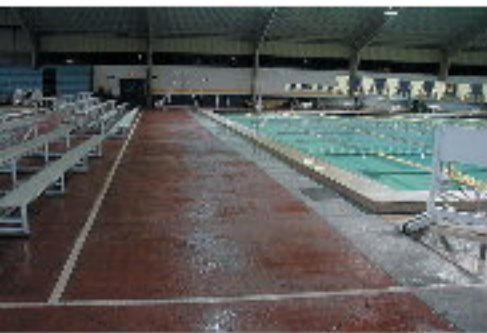
Define Your Image!

Renew-Crete® Systems

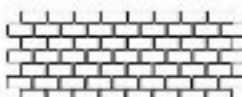
- Easy Maintenance
- Slip Resistant
- Added Value and Curb appeal
- Great for all Climates
- Exceptional Durability
- Oil, Rust & Mildew Resistant
- Large Color Selection
- Colors will not fade
- Many styles to choose from
- Best Quality Materials Used

Decorative Concrete never looked so good!
A full range of Decorative Concrete Applications
to fit any budget, installed by Factory-Trained,
Quality-Minded Professionals!

Renew-Crete Spray Coat For New or Old Concrete!



Industrial-Commercial-Residential-Driveways
Pool Decks-Patios-Walkways and more!



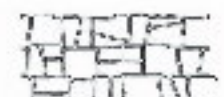
Running Bond
12" x 6" x 3" (3/4")
12" x 6" x 3" (3/4")



Cobblestone
4" x 4" x 3" (3/4")
12" x 6" x 3" (3/4")



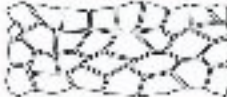
Mediterranean Tile
12" x 12" x 3" (3/4")
12" x 12" x 3" (3/4")



Hammered Edge Stone
12" x 12" x 3" (3/4")
12" x 12" x 3" (3/4")



European Pave
12" x 12" x 3" (3/4")
12" x 12" x 3" (3/4")



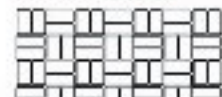
Flagstone
12" x 12" x 3" (3/4")
12" x 12" x 3" (3/4")



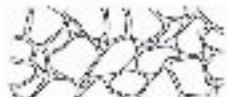
Original Herringbone
12" x 12" x 3" (3/4")
12" x 12" x 3" (3/4")



Keystone
12" x 12" x 3" (3/4")
12" x 12" x 3" (3/4")



Basket Weave
12" x 12" x 3" (3/4")
12" x 12" x 3" (3/4")



Riverstone
12" x 12" x 3" (3/4")
12" x 12" x 3" (3/4")



Ashlar Tile
12" x 12" x 3" (3/4")
12" x 12" x 3" (3/4")



Roman Stone
12" x 12" x 3" (3/4")
12" x 12" x 3" (3/4")



Random Stone
12" x 12" x 3" (3/4")
12" x 12" x 3" (3/4")



California Weave
12" x 12" x 3" (3/4")
12" x 12" x 3" (3/4")



Cobblefren
12" x 12" x 3" (3/4")
12" x 12" x 3" (3/4")



Paper Brick Header
12" x 12" x 3" (3/4")
12" x 12" x 3" (3/4")



Brick Header
12" x 12" x 3" (3/4")
12" x 12" x 3" (3/4")



Universal Circle
12" x 12" x 3" (3/4")
12" x 12" x 3" (3/4")



Inca Sun
12" x 12" x 3" (3/4")
12" x 12" x 3" (3/4")



Cobble Header
12" x 12" x 3" (3/4")
12" x 12" x 3" (3/4")



Star Circle
12" x 12" x 3" (3/4")
12" x 12" x 3" (3/4")



Universal Circle
12" x 12" x 3" (3/4")
12" x 12" x 3" (3/4")



Cobble Circle
12" x 12" x 3" (3/4")
12" x 12" x 3" (3/4")

Many more styles to choose from...

CALL TODAY FOR A FREE CONSULTATION

Concentrated Stamped Overlay Mix

Renew-Crete® introduces a revolutionary Stamp Mix!

Renew-Crete® Stamp Mix is designed with thought to the end user. A simple, ready to use, one part bag mix, which costs less than mixing individual components! No more measuring polymers, Portland, silicates, and pigments in individual batches and ending up with inconsistent materials and colors.

Renew-Crete® Stamp Mix Advantages:

- The Renew-Crete® Co-Polymer is In the MIX!
- Easy to use, just add water, 2 color packs & sand!
- Available in 28 Colors.
- Saves up to 65% in freight costs!
- Adjustable mix design makes it ideal for all applications:
 - ¼" to ½" Stamped Overlays
 - Step Facing
 - Cantilevered edges and more.

Unit Coverage / Cost per sq. ft.:

- | | |
|------------------------|----------------|
| • 70 sq. ft. @ 1/4" | \$0.67 sq. ft. |
| • 57.5 sq. ft. @ 5/16" | \$0.82 sq. ft. |
| • 45 sq. ft. @ 3/8" | \$1.05 sq. ft. |
| • 35 sq. ft. @ 1/2" | \$1.35 sq. ft. |
- Can be mixed using a 5 gal. Pail or a mixer.
 - Reduces costly errors and labor costs substantially.
 - Increases job efficiency and production by reducing errors and mixing / measuring time.
 - Superior adhesions, flexibility, impact resistance, wear and bond strength!



The Renew-Crete® stamp mix is by far the best product on the market!
Don't stake **your reputation** on anything less!

Renew-Crete®
Systems

**Don't Remove It!
Improve It!**

Concrete by Design

*For
Old or New
Concrete!*

***Commercial
Residential
Industrial
Interiors
Exteriors***

Excellent for:

***Roadways
Parkways
Walkways
Pool Decks
Driveways
Patios***

Define Your Image.....

Renew-Crete® Systems

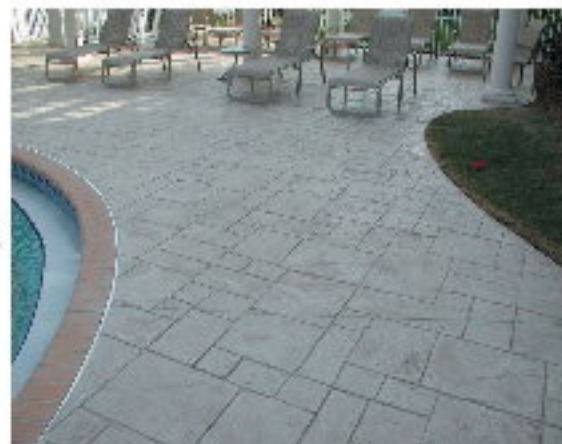
Decorative Concrete never looked so good!
A full range of Decorative Concrete Applications
to fit any budget, installed by Factory-Trained,
Quality-Minded Professionals!

- Easy Maintenance
- Slip Resistant
- Added Value and Curb appeal
- Great for all Climates
- Exceptional Durability
- Oil, Rust & Mildew Resistant
- Large Color Selection
- Colors will not fade
- Many styles to choose from
- Best Quality Materials Used

Imprinted Renew-Crete For New or Old Concrete!



**Industrial
Commercial
Residential
Driveways-Walkways
Patios-Pool Decks
and More!**



La Habra
Slate



Royal
Ashlar



Random
Stone



New Brick
Herringbone



Pacific
Boardwalk



Grand Ashlar
Slate



London
Cobblestone



European Fan



Ashlar Slate



Old Granite
Seamless Skin



Italian Slate
Seamless Skin



Roman Slate
Seamless Skin



Many more to choose from...

Call Today For A Free Consultation

Renew-Crete® Systems

Innovative Products

For An Innovative Industry

Colors Available In:
Colorhardner • Spray Coat
Stamp Mix • Release Powder
Color Wash • Curb Coat
Counter Mix • Re-Coat • Roll Coat

RENEW-CRETE® COLORS



Ash



Beige



Ivory Sand §



Philly Blue † §



Shell White



Adobe Buff §



Light Rose



Green



Sable §



Sandstone



Flagstone Buff



Gray Slate



Gray Stone



Miami Buff



Canyon Tan



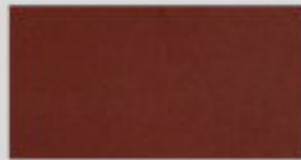
Red Taupe



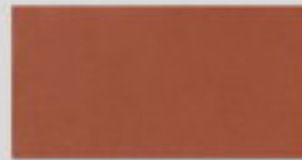
Silver Gray



Phoenix Tan



Tile Red



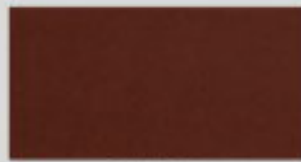
Saultillo Tile



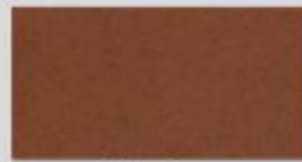
French Gray



Autumn Brown



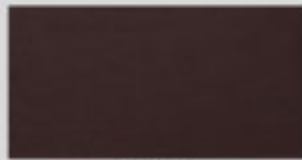
Brick Red



Terra Cotta



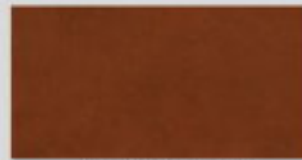
Charcoal



Walnut



Rustic Brown



Terra Cotta Light*

* Available in curb coat only unless special ordered

† Additional Cost for this color

§ Colors not available in release powder

Note: Color Selections in this brochure are approximations only and represent as closely as possible, in a printed version, the appearance of Renew-Crete products when cured and sealed using Renew-Crete High Gloss Sealer. Variations can be expected due to finishing techniques, lighting and jobsite conditions. If exact color is a concern, you should request an actual sample.

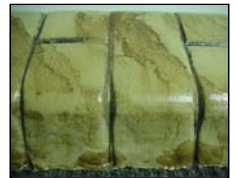
<http://www.renewcrete.com>


Renew-Crete® Systems

Innovative Products For An Innovative Industry



- Color Packs (CP):** Integral Iron Oxides specifically blended and weighed for uniform colors. These Color Packs are added to Renew-Crete **Light/Dark Base** Bag mixes to achieve the colors represented on the Renew-Crete® color chart.
- Colors Available: All colors except Terra Cotta Light
- Spray Coat (SC):** Premixed bag mixes used for spray and trowel applications usually no more than 1/8" thick per coat. No need for special additives or "activators", everything is included.
- Coverage: 80-160 sq. ft. depending on the specific application.
- Colors Available: Available in Light/Dark Base for use with Color Packs.
- Re-Coat (RC):** Premixed bag mixes used for resurfacing applications usually no more than 1/16" thick. No need for special additives or "activators", everything is included.
- Coverage: 150-200 sq. ft. per coat depending on the specific application and substrate.
- Colors Available: Available in Light/Dark Base for use with Color Packs and Neutral.
- Color Hardener (CH):** A blend of the highest grades of Portland cements, Iron Oxides and Silicas used for coloring fresh poured concrete prior to stamping. Renew-Crete® Colorhardener provides exceptional wear and impact resistance.
- Coverage: 80-120 Sq. Ft. per 60 Lb pail, depending on the color.
- Colors Available: All colors except Terra Cotta Light.
- Roll Coat (Roll):** Premixed bag mixes used for re-coloring of decorative concrete surfaces for applications usually no more than 1/32" thick per application. No need for special additives or "activators", everything is included
- Coverage: 150-250 sq. ft. per bag using a roller or commercial paint gun.
- Colors Available: Available in Light/Dark Base for use with Color Packs.
- Counter Mix (CM):** Concentrated premixed base mixes for use in manufacturing concrete countertops and slabs from 3/4 inch to 3 inches in thickness. Exceptional finishing characteristics and minimum set time make this the perfect choice for this application. May be used in either cast in place or pre-cast applications.
- Coverage: 6 Sq. Ft. @ 1.5 Inches and 4.5 Sq. Ft. @ 2 Inches.
- Colors Available: Available in Light/Dark Base for use with Color Packs. This product also works well with the Renew-Crete® Chemical Stains
- Concentrate Stamp Mix (SM):** Primarily used for Stamped overlay applications from 1/4 inch to 3/4 inches. This product weighs approximately 65% less freight than Stamp Mix Complete. Just add Color Packs, sand and water.
- Coverage: 70 sq. ft. per 40 Lb bag @ 1/4 inch, 57 Sq. Ft @ 5/16 inch and 45 sq. ft at 3/8 inch thick.
- Colors Available: Available in Light/Dark Base for use with Color Packs.
- Powder Release (RA):** A Pre-Colored Release agent used primarily in stamping fresh concrete, which keeps the stamping tools from sticking to the fresh concrete.
- Coverage: 1000 sq. ft. per 30 Lb. Pail.
- Colors Available: Available in all colors except: Sable, Ivory Sand, Terra Cotta Light, and Adobe Buff.
- Curb Coat (CC):** A Concentrated blend of the highest grades of Portland cements, Iron Oxides and Silica's used for coloring fresh Concrete Curbing prior to stamping. Add only sand and water.
- Coverage: 150-250 Lineal. Ft. per 50 Lb Pail
- Colors Available: All colors.
- Color Wash (CW):** A Renew-Crete® exclusive water based antiquating system used to add highlights to most types of decorative concrete. Can be used as a single color or multiple color application.
- Coverage: 1500 - 2000 Sq. Ft. per 10 Lb bag depending on application rate
- Colors Available: All colors.



		Base Color Packs		10/18/2004
		40 Lbs	45 Lbs	
Base Color Reference Chart				
# of Color Packs (CP) required				
Color Code	Base Color	SM-CP	SC-CP	
Adobe Buff	Dark Base	2	1	
Autumn Brown	Dark Base	2	1	
Brick Red	Dark Base	2	1	
Charcoal	Dark Base	2	1	
French Gray	Dark Base	2	1	
Gray Slate	Dark Base	2	1	
Green	Dark Base	2	1	
Miami Buff	Dark Base	2	1	
Phoenix Tan	Dark Base	2	1	
Red Taupe	Dark Base	2	1	
Rustic Brown	Dark Base	2	1	
Shell White	Dark Base	2	1	
Silver Gray	Dark Base	2	1	
Terra Cotta	Dark Base	2	1	
Tile Red	Dark Base	2	1	
Walnut	Dark Base	2	1	
Color Code	Base Color			
Ash	Light Base	2	1	
Beige	Light Base	2	1	
Canyon Tan	Light Base	2	1	
Flagstone Buff	Light Base	2	1	
Gray Stone	Light Base	2	1	
Ivory Sand	Light Base	2	1	
Light Rose	Light Base	2	1	
Mojave Sand	Light Base	2	1	
Phily Blue	Light Base	2	1	
Sable	Light Base	2	1	
Sandstone	Light Base	2	1	
Saultillo Tile	Light Base	2	1	

Renew-Crete® Systems

**Innovative Products
For An Innovative Industry**



Re-Coat



For the Ultimate in concrete repair & resurfacing, rely on Renew-Crete®.

Re-Coat is a co-polymer modified resurfacing compound especially formulated to dry to a light gray color to resemble newly cured concrete. *Re-Coat* is perfect to restore old stained concrete surfaces, rain damaged slabs, scaling or dusting concrete. This product can be applied from a featheredge up to ½” thick, broomed, squeegeed, or troweled on. *Re-Coat* is available in 30 standard colors as well as neutral gray. Re-Coat is a simpler, more cost effective choice than tearing out and replacing an existing slab. The material cost is about .16-.20 cents per sq. ft. with one coat for neutral gray and approximately .35-.40 cents per sq. ft. for colored and sealed Re-Coat.

Directions:

Surface Preparation:

The concrete surface must be clean and free of all loose material, oil residue, sealers or paints. Clean thoroughly by using a pressure washer with a degreaser or stripper if necessary. Etch the surface using a 1-4 muriatic acid solution. Rinse clean and neutralize.

Mixing instructions 45 Lb. Unit:

In a clean 5-gallon pail measure 1.25 gallons of clean water. Using a drill with a mixing wand, slowly add the dry *Re-Coat* to the water as you are running the mixing wand. Once you have added all the material, continue to mix thoroughly for 2 minutes to a fluid consistency with no lumps. You may add up to 1 additional pint of water if needed.

Application Instructions:

Patch & leveling: Start by misting the surface with water, (surface should be damp only, no standing water) then apply the *Re-Coat* mix. Screed where necessary, smooth with a round edged fresno or pool trowel, keeping all tools clean and moist., finish as desired (i.e. broom texture, etc.) Allow all patch and leveled areas to dry before applying Re-Coat (1-5 hours). It is also a good idea to smooth the edges around patches with a damp sponge within 2 hours.

Broom Finish: Start by misting the surface with water, then apply the Re-Coat with squeegee, allow material to dry slightly (3-10 Minutes), then follow with a broom.

Note: If a great deal of patching has been done you may need to apply second coat over the entire area to ensure color uniformity. Wait until the first application is dry, (1-3 hours) and then re-apply.

Coverage: 1-45 Lb. unit will cover approximately. 150-250 sq. ft. broomed or squeegeed, 22 sq. ft. at ¼” thick.



Re-Coat, another innovative product from Renew-Crete® Systems!

Renew-Crete®
Systems

Innovative Products

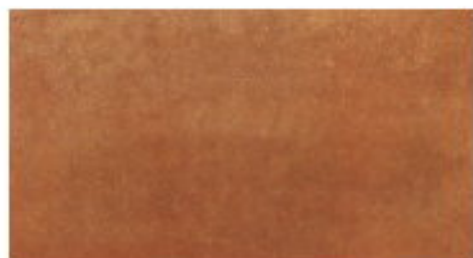
For an Innovative Industry

Renew-Crete Chemical Stain

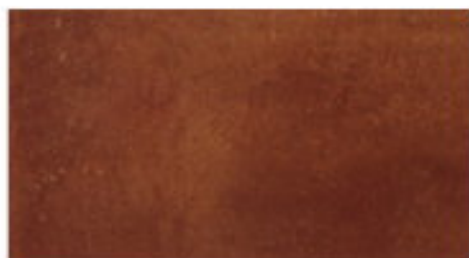
Great for Interiors or Exteriors.
Commercial, Residential and Industrial
Economical, Versatile and Durable
Elegant and Easy to Maintain
Available in 8 Attractive Colors



For More Information Contact:

**Carmel Tan**

Buckskin Suede with Caramel Marbling

**Coffee**

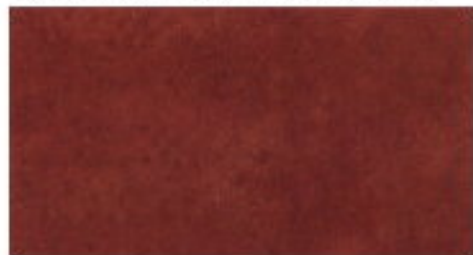
Reddish Brown Resembling Old Leather

**Ebony**

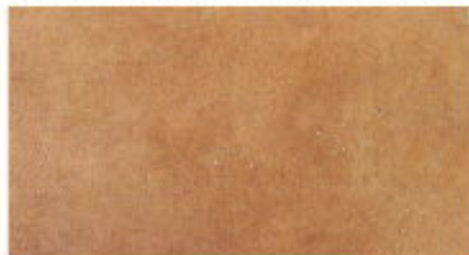
Tortoise Shell Black with Brown Marbling

**Sea Blue**

Soft Blue Parina with Undertones of Green

**Antique Red**

Terra Cotta with Rust and Soft Brown Hues

**Honey Gold**

Golden Honey with Amber Wheat Undertones

**Leaf Green**

Soft Grey Green Resembling Aged Italian Marble

**Terra Cotta**

Deep Earth Tone with Deep Red and Light Brown Highlights

Renew-Crete[®]
Systems

www.renewcrete.com

Price List

Surface Preparation

Retail

Acid Brush	Acid Scrub Brush	7.65
.080x5	Supreme 5" x .080" Diamond Blade"	65.00
.250 X 4 Tuck"	4 .250 Tuckpoint Supreme"	65.00
.375 x 4 Tuck	4x .375 Tuckpoint Supreme"	150.00
4" Chaser	4 Diamond Segmented Crack Chaser"	187.50
4" Cup	4" Diamond Cup Grinding Disc Supreme	190.00
7" Cup	7" Diamond Cup Grinding Disc Supreme	250.00
DM	Dust Muzzle fits 4" grinder (need grinder model)	40.00
DM-Cover	Dust Muzzle fits 4" grinder (cover for crack chasing)	18.65
DM-Hose	Dust Muzzle Vacume Hose	29.87
Crack-2gal	High Strength Crack Epoxy (2 gallon unit)	95.00
4" Mesh	Crack Mesh 4 x100"	25.00
6" Mesh	CrackMesh 6"x100'	29.95
Angle	4 Angle Grinder 5/8 Arbor"	45.00
Dad's-1G	Dad's Stripper 1 Gal Contractors Grade w/sprayer	27.26
Dad's-5G	Stripper 5 gal Contractors Grade	130.00

Resurfacing & Repair Products

Patch-It	Patch-It leveling compound 45 Lb Bag	22.50
PI-Light / Dark Base	Light / Dark Base Patching Compound (add 1 color pack)	30.25
Re-Coat Neutral	Neutral Re-Coat Mix 45 Lb. Bag	31.50
Re-Light / Dark Base	Colored Re-Coat Mix 45 Lb. Bag (add 1 color pack)	34.75
Roll-Coat- Light / Dark	Light / Dark Base 32 Lb Pail (add 2 color packs)	47.50
T-Broom-24	Wood Cement Finishing Broom 24"	24.69
T-Broom-36	Wood Cement Finishing Broom 36"	37.50

Spray Coat Products

SC-Light/ Dark Base	Light / Dark Base Spray Coat Mix. 45 Lbs. (add 1 color pack)	25.87
ST-All	Stencil 1079 sq. ft. (Non Sticky) Free Shipping UPS Ground	249.95
STH-All	Stencil Header 321 ft.	99.00
STC-All	Stencil Circles (many sizes available)	Call
GT-1/2	Grout Tape 1/2"	2.50
GT-3/8	Grout Tape 3/8"	2.50
Compressor	Portable Air Comp. With Hose and regulator	450.00
Texture Gun	Renew-Crete Floor Texture Gun and Hopper only	129.95
Stand	4' Hopper Gun Stand only	65.00

Stamped Overlay Products

BC-Gray	Ready to use bond coat 45 Lbs	40.00
SM-Light/Dark Base	Stamp Mix Concentrate (add 2 color pack to each bag) 40 Lbs	47.50
CP-All	Color Packs for Light / Dark Base (except Philly Blue)	1.25
CP-Philly	Philly Blue Color Packs	6.25
SMC-Light /Dark Base	ready to use Stamp Mix 60 Lbs. (add 1 color pack) 60 Lbs	28.75
LR-5	Liquid Release 5 gal	79.95
GR-24	24 Gauge Rake"	55.00
GR-36	36 Gauge Rake"	60.00



Innovative Products

For an Innovative Industry

Stamped Concrete		
CH-All	Colorhard 60 Lb Pail (All Colors except Philly Blue)	28.50
CH-Philly Blue	Philly Blue Colorhard 60 Lb Pail	48.50
RA-	Colored Powder release agent 33 Lb Pail	79.95
RA-1/2	1/2 Pail Colored Powder release agent 15 Lb Bag	44.98
Concrete Counter Products		
CM-Light / Dark Base	Counter Mix Concentrate 32 Lb Pail (use with 2 color packs)	47.50
CM-Light	Counter Mix formulated for Acid Staining 32 Lb Pail	55.00
CMF-32-CS	Counter Top Form Capstone Profile 32'	90.00
CMF-32-DC	Counter Top Form Diamond Profile 32'	90.00
CMF-32-MR	Counter Top Form Marble Round Profile 32'	90.00
CMP-4-150	150 grit 4" Diamond Polishing Flex Disc	39.95
CMP-4-300	300 grit 4" Diamond Polishing Flex Disc	39.95
CMP-4-500	500 grit 4" Diamond Polishing Flex Disc	39.95
CMP-4-1000	1000 grit 4" Diamond Polishing Flex Disc	39.95
CMP-4-Pad	4" Velcro Backer Pad for Flex Disc	42.00
MC-Clear	Food Grade Urethane Sealer 1 Gal	145.00
MC-Set	Urethane Activator 1/2 Pint	35.00
MC-Thin	Urethane Thinner 1 Gal	33.00
Curb Products		
CC-All	Curb Coat 50 Lb Pail (all colors except Philly Blue)	45.00
CC-Philly Blue	Philly Blue Curb Coat 50 Lb Pail	55.00
Detailing & Antiquating		
CW-All	Color Wash Antique Powder 10 Lb Bag (all colors except Philly)	15.00
CW-Philly Blue	Color Wash Antique Powder Philly Blue 10 Lb Bag	20.00
Grout-4	V Joint Touch-up wheel	45.00
Grout-90	Round Nose Touch-up wheel	45.00
Grout-Brick	Brick Grout Touch-up wheel	45.00
HT-4	Hand Tools Narrow Jnt	60.00
HT-5	Hand Tools wide Jnt	60.00
HT-6	24 HT-6 Bar"	60.00
IMP-1	20 Lb. Impact tool w/ handle	80.00
Dash	Tampico Dash Brush	8.60
Acid Stain		
PI- Light	Resurfacing compound formulated for Acid Staining 45 Lbs	27.00
AS-	Acid Stain All 8 Colors	49.95
AS-Video	Acid Stain Instruction Video	35.00
Chemicals & Sealers		
S-HiSeal-5	Renew-Crete Hi-Gloss 30 Sealer 5 gal	89.95
S-HiSeal-55	Renew-Crete Hi-Gloss Sealer 55 gal Drum	899.50
S-ReSeal-5	Renew-Crete Re-Sealer 5 gal	79.95
S-ReSeal-55	Renew-Crete Re-Sealer 5 gal	799.50
S-Clear	Renew-Crete Clear Shield ,Water Based Sealer 5 gal	118.50
S-Color	Renew-Crete Color Shield, 8 Colors 5 gal	118.50
Xylene-5	Xylene 5 gal Pails	30.00
Xylene-55	Xylene 55 gal Drum	310.00
Finish-1	High Traffic Commercial floor wax 1 gal	29.95
Finish-5	High Traffic Commercial floor wax 5 gal	134.95
Rhino	Rhino-Grip (Case of 6)	60.00
Rhino-1	Rhino-Grip 1 Quart	12.00
Rhino-Tips	Rhino-Tip for SP-35	8.00
Drum Dolly	55 Gal. Drum Dolly	100.00
3/4" Drum	3/4" Drum Spout for 55 gal drum	15.00

Innovative Products

For an Innovative Industry

Resins		
LP-5	Renew-Crete Liquid Co-Polymer 5 Gal	125.00
LP-55	Renew-Crete Liquid Co-Polymer 55 Gal Drum	1,375.00
Tools and Misc.		
Margin	5 x 2" Margin Trowel"	5.25
Mag-48	48" Round End Mag Bullfloat"	126.50
Mag-Float	16" Mag Hand Float	24.60
Rock-It Pro	Pro Series Rock-It Rock-It Angle adapter	90.00
Pool-16	16 Softgrip Rounded Trowel (Long Shank)"	28.80
Rub	6x3x1 Carborundum Rubbing Brick	20.25
Scraper	18" Steel Floor Scraper"	46.50
Square 18	18" Square Finish Trowel	31.50
Squeegee 24	24 Commercial Squeegee"	29.95
Mixing Wand	Quick Mixer 6.5" Blade"	22.23
Kumalong	24 Concrete Kumalong w/Vinly Handle"	23.55
Edger	3 x 6" x 3/8" Hand Edger"	5.31
Fresno Adptor	Single Bolt Fresno Handle Adptor	16.50
Ext-6	6' x 1 1/2 Aluminum Ext. Hndl"	24.00
Fres-30	30 Steel Fresno	45.00
Funny2	Funny Trowel Handle Adapter	5.85
Marketing		
Bro-Color	Renew-Crete Color Charts	0.25
Bro-CM	Counter Top Brochure	0.20
Bro-SC	Spray Coat Brochure	0.18
Bro-SM	Stamp Brochure	0.18
Bro-Acid	Acid stain brochure and color chart 1/2 Page	0.15
Name	Custom Name Stamp	150.00
Vehicle	Renew-Crete® Vehicle Lettering (2)	60.00
Yard	Renew-Crete® Yard Sign	35.00
Sprayers		
SP-1963	Renew-Crete 1963 Steel 3.5 gal Sealer Sprayer w/ Viton Seals	129.95
SP-20A	2 gallon Acid Sprayer	100.00
SP-20C	2 gallon Constr. Sprayer	90.00
SP-35C	3.5 Gal Constr. Sprayer w/Rhino Tips	100.00
Plastic Forms		
2x12x12	2x12x10 Plastiform Boards(30 LF)	360.00
2x4x12	2x4x12 Plastiform Boards (120 LF)	349.20
2x4x16	2x4x16 Plastiform Boards (160 LF)	465.60
2x6x12	2x6x12 Plastiform Boards (60 LF)	299.95
2x6x16	2x6x16 Plastiform Boards (80 LF)	399.95
2x8x12	2x8x12 Plastiform Boards (48 LF)	324.00
Cams	Regular Camlocks (Boxes of 100)	2.75
Stakes-18"	3/4" x 18" Round Steel Stakes (25 per bndle)	3.00
Stakes-24"	3/4" x 24" Round Steel Stakes (25 per bndle)	3.25
Plastic Form Discounts available based on volume		
Stamping Tools		
Call for Tool information		

Quick Reference Product Sheet

Product	Description	Coverage per Unit	Unit Cost	SF Cost	Pallet Qty
Surface Preparation					
Crack Epoxy-2	10 lb 2 gal Unit 2 Part Crack Repair Epoxy	125-150LF	\$95.00	\$0.63	
4" Crack Mesh	1 lb 100' Roll 5oz Fiberglass Mesh	100 LF	\$25.00	0.25 lf	
6" Crack Mesh	1lb 100' Roll 5oz Fiberglass Mesh	100LF	\$29.95	0.30 lf	
Dad's Stripper	9 lb 1 gal Contractors Paint / Adhesive Remover	100-150 SF	\$27.26	\$0.18	
Dad's Stripper	45 lb 5 gal Contractors paint / Adhesive Remover	500-750 SF	\$130.00	\$0.18	
.080x5	Supreme 5" x .080" Diamond Blade"	300-500 LF	\$65.00		
.250 X 4 Tuck"	4 .250 Tuckpoint Supreme"	2500-4000LF	\$65.00		
.375 x 4 Tuck	4x .375 Tuckpoint Supreme"	2500-4000LF	\$150.00		
4" Chaser	4 Diamond Segmented Crack Chaser"	1500-2000 LF	\$187.50		
4" Cup	4" Diamond Cup Grinding Disc Supreme		\$190.00		
7" Cup	7" Diamond Cup Grinding Disc Supreme		\$250.00		

Resurfacing & Repair Products

Patch-It	45 lb Bag Patching Compound	23 SF @ 1/4" 90 SF @ 1/16"	\$22.50	\$1.00 // \$0.25	50 Bags
PI-Light / Dark Base	45 lb Bag Tintable Patching Compound (add 1 -CP)	23 SF @ 1/4" 90 SF @ 1/16"	\$30.25	\$1.32// \$0.34	50 Bags
RC-Neutral	45 lb Bag Light Gray Re-Coat Resurfacing Compound	135-180 SF @ Broom Finish	\$31.50	\$0.18	50 Bags
RC-Light / Dark Base	45 lb Bag Re-Coat Resurfacing Compound (add 1 -CP)	135-180SF @ Broom Finish	\$36.00	\$0.20	50 Bags
Roll-Coat- Light / Dark	32 Lb Pail Light / Dark Base Tintable Roll Coat (add 2-CP)	400-600SF @ Rolled Finish	\$47.50	\$0.10	36 Pails
T-Broom-24	Wood Cement Finishing Broom 24"		\$24.69		
T-Broom-36	Wood Cement Finishing Broom 36"		\$37.50		

Spray Coat Products

SC- Light/Dark Base	45 lb Bag Spray Deck Coating (add Color - 1 CP)	90-135 SF Base/ Spray	\$25.87	\$0.19	50 Bags
ST-All	Patterned Stencil (Non Sticky) Free Shipping UPS Ground	1079 SF	\$249.95	\$0.23	
STH-All	Patterned Stencil Headers	321 SF	\$99.00	\$0.31	
STC-All	Patterned Stencil Circles	(many sizes available)	Call		
GT-1/2	Grout Tape 1/2"	60 Yds	\$2.50	\$0.01	72 Case
GT-3/8	Grout Tape 3/8"	60 Yds	\$2.50	\$0.01	96 Case

Stamped Overlay Products

Quick Reference Product Sheet

Curb Coat	50 lb Pail	Stamped Curbing Coat	150 LF	\$45.00	\$0.30	36 Pails
Stamp Mix Concentrated	40 lb Bag	Overlay Mix /Concentrate (Pre-Colored)	70 SF @ 1/4" // 45 SF @ 3/8"	\$50.00	\$.71 // \$1.11	50 Bags
Stamp Mix Light/Dark Base	40 lb Bag	Overlay /Concentrate (add Color - 2CP)	70 SF @ 1/4" // 45 SF @ 3/8"	\$47.50	\$.68 // \$1.05	50 Bags
Stamp Mix Complete	60 lb Bag	Overlay /Ready to use (add Color - 1 CP)	35 SF @ 1/4" // 23 SF @ 3/8"	\$30.00	\$.86 // \$1.30	50 Bags
BC-Gray	45 lb Bag	Base Coat for Stamped Overlays	150-200 SF	\$40.00	\$0.20	50 Bags
CH-All	60 lb Pail	Dry Shake Colorant (Pre-Colored)	80-100 SF	\$28.50	\$0.29	36
RA-All	30 lb Pail	Stamp Tool Release all Colors	800-1000 SF	\$79.95	\$0.08	36
LR-5	38 lb 5 Gal Pail	"Bubblegum" Tool Release	800-1000 SF	\$79.95	\$0.08	36
CW-All	10 lb Box	Antique Mix all colors	1500-2000 SF	\$15.00	less than .01	36
CP-All	For use with all Light & Dark Bases (Color Packs)			\$1.25		
PI-Light	45 lb Bag	Light Gray Compound (for Acid Staining)	23 SF @ 1/4" 90 SF @ 1/16"	\$27.00	\$1.20 // \$0.30	50 Bags
Prime-It	9 lb	1 gal Surface Primer for leveling Products	150-200 SF	\$12.50	\$0.06	
LP-5	45 lb	5 gal Pail Cement Modifier Additive (Concentrated)	See Usage Guid	\$125.00		36
S-Hiseal-5	35 lb	5 gal Pail 30% Solids Solvent Based Acrylic	400-600 SF	\$89.95	\$0.15	36
S-Reseal-5	35 lb	5 gal Pail 20% Solids Solvent Based Acrylic	400-600 SF	\$79.95	\$0.10	36
Rhino-Grip	6 lb	6 qt/Case Skid Resistant Sealer Additive	800-1000 SF per Qt	\$60.00	\$0.01	
AS-All	1 gallon	Reactive Concrete Stain (8 Colors available)	400 SF per Gallon	\$49.95	\$0.12	24 Cases
Xylene	30 lb	5 gal Pail Heavy Duty Thinner / Solvent		\$30.00		36
Xylene	350 lb	55 gal Drum Heavy Duty Thinner / Solvent		\$250.00		2
SP1963 Chemical Sprayer	10 lb	2 gal Acid Resistant Sprayer Nytril Seals		\$129.95		
	10 lb	2 gal Solvent Resistant Sprayer Viton Seals				
	10 lb	3.5 gal Solvent Resistant Sprayer Viton Seals				
	15lb	3.5 gal Tri-poxy Metal Sprayer Viton Seals				
24" Gauge Rake	9 lb	Heavy Duty Alum. 0" to 1-1/4" Depth w/Handle		\$50.00		
36" Gauge Rake	10 lb	Heavy Duty Alum. 0" to 1-1/4" Depth w/Handle		\$60.00		
48" Gauge Rake	12 lb	Heavy Duty Alum. 0" to 1-1/4" Depth w/Handle		\$70.00		
Tampico Dash Brush	Large Dash Brush			\$8.60		
Impact Tool	20 lb. Impact tool w/ handle			\$80.00		
42" Bull Float	42" Magnesium Bull Float 4 Hole Mount			\$106.50		
30" Fresno	30" Steel Fresno Tab Mount			\$45.00		
Fresno Adapter	30" Fresno Adapter			\$16.50		
16" Pool Trowel	16" Long Shank Soft Grip Handle			\$28.80		
6" Extension Handle	6' x 1 1/2" Aluminum Extension Handle			\$24.00		
T-Rockit Pro	Pro Series Rock-It Rock-It Angle adapter			\$90.00		